

Washington County Fair  
P.O. Box 711  
Abingdon, VA 24212



# Washington County Fairground Map



# TABLE OF CONTENTS

Schedule of Events .....	1-6
Greased Pig Scramble /Ag Olympics .....	7
Pet Show and Fun Match .....	8
<b>Youth Arts &amp; Crafts Rules</b> .....	9
Dept. A: Youth Crafts .....	10
Dept. A: Youth Horticulture .....	11
Dept. B: Breads, Cookies/Cakes/Pies, Candy .....	12
Dept. B: Canned Foods .....	13
Dept. C: Clothing .....	13
Dept A: Field Crops and Vegetables .....	14
Dept. B: Burley Tobacco .....	15
<b>Adult Home Economics Department Rules</b> .....	16
Dept. A: Crafts .....	17-18
Dept. B: Foods / Breads .....	19
Dept. B: Special Bread / Special Cakes / "Home Grown" .....	20
Dept. B: Special Rolls / Apple Pie .....	21
Dept B: Cakes / Pies .....	22
Dept B: Cookies / Candy / Canned Goods .....	25-26
Dept C: Horticulture (Flowers) .....	27-28
Dept D: Design Division .....	29
Sample Entry Tag .....	30
Livestock .....	31
Youth Activities & Livestock Division Rules .....	32-33
Animal Exhibitor Code of Conduct .....	34
Beef Show Rules .....	35-36
Dept. A: Beef Cattle .....	37-38
Dept. B: Junior Sheep & Market Goats .....	39
Market Lamb Show .....	40
Junior Market Commercial Ewe Lamb Show .....	41
Dept. C: Open Goats and Open Sheep .....	42
Registered/Commercial Goat Show .....	43
Fair Contact Information .....	45
Fair Directors / Sponsors .....	46



## DAILY ADMISSION

Adults	\$10
Ages 6-12	\$2
Under 6	FREE

## WEEKLY PASS

(Up to Sept. 1)  
\$45

## FREE ADMISSION

Tuesday, Sept. 10  
for Active Military, Veterans, and  
First Responders  
with Proper I.D.

**PRE-FAIR EVENT**  
**Saturday, September 7th**

## Team Roping

Event begins @ 10am  
Books open @ 9am



**All Entertainment  
Shows Begin at  
8pm!**

## FAIR DIRECTORS

Alan McCall  
Mike Overstreet  
Janet Lester  
Todd Reynolds  
Kristen White  
Shauna Reynolds

Mike Anderson  
Debbie Icenhour  
Roger Garrett  
Kevin Thayer  
Sarah Scyphers  
Zane Pierce

Charles Meade  
Phil McCall  
Jennife Blankenship  
Natalie Blevins  
Laura Boardwine  
Kate Belcher



# WE SALUTE OUR SPONSORS!

## PRE-FAIR EVENTS

### Saturday, September 7, 2019

10:00 a.m. Fair Kick-Off Parade  
7:00 p.m. Team Roping

### Sunday, September 8, 2019

2:00-6:00pm Enter Youth Arts, Crafts, Clothing, Foods, Canned Foods, Flowers, and Educational Exhibits (A)  
2:00-6:00pm Enter Adult and Youth Farm Crops and Tobacco (A)  
2:00-6:00pm Enter Adult Canned Foods, Foods, Crafts, Potted Plants, Flowers, and Educational Exhibits (A)

### Monday, September 9, 2019

4:00pm GRAND OPENING OF FAIR  
6:00pm Carnival Opens (H)  
6:00pm 4-H Market Hog Show (E)  
6:00pm Pork Industry Event  
6:00pm Petting Zoo (F) Sponsored by **Ballad Health - Johnston Memorial Hospital** and **First Bank & Trust**  
6:30pm Pageants (A)  
7:00pm NoJoe & TooT's Clown Circus (OS) Sponsored by **Eastman Credit Union** and **Washington County Farm Bureau**  
8:00pm James Barker Band (OS) Sponsored by **WXBQ**  
9:30pm NoJoe & TooT's Clown Circus (OS) Sponsored by **Eastman Credit Union** and **Washington County Farm Bureau**

\* Unlimited Carnival Rides - \$10 per person 6:00pm-9:00pm  
\* Rides per Ticket Price - 9:00pm - closing

**Tuesday, September 10, 2019**

10am-2pm	Senior Citizen's Day (Free Admission Until 3:00pm) Sponsored by <b>Kroger</b> , <b>Farris Funeral Home</b> , and <b>New People's Bank</b>
10:00am	Petting Zoo (F) Sponsored by <b>Ballad Health - Johnston Memorial Hospital</b> and <b>First Bank &amp; Trust</b>
11:00am	Bristol Show Choir
1:00pm	NoJoe & TooT's Clown Circus (OS) Sponsored by <b>Eastman Credit Union</b> and <b>Washington County Farm Bureau</b>
1:30pm	Door Prize Drawing
4:00pm	Doors Open - Free Admission for Veterans, Military, First Responders with proper ID (Tuesday only)
4:30pm	Livestock Judging (E)
6:00pm	Ag Olympics (E)
6:00pm	Petting Zoo (F) Sponsored by <b>Ballad Health - Johnston Memorial Hospital</b> and <b>First Bank &amp; Trust</b>
6:00pm	Carnival Opens (H)
6:30pm	Horse & Mule Pulling Contest (I)
6:30pm	BINGO (A)
6:30pm	4-H Country Ham Show (A)
7:00pm	NoJoe & TooT's Clown Circus (OS) Sponsored by <b>Eastman Credit Union</b> and <b>Washington County Farm Bureau</b>
8:00pm	The Church Sisters (OS)
9:30pm	NoJoe & TooT's Clown Circus (OS) Sponsored by <b>Eastman Credit Union</b> and <b>Washington County Farm Bureau</b>

\* Unlimited Carnival Rides - \$22 per person 6:00pm-10:00pm

\* Per Ticket Price - 10:00pm - Closing

## INFORMATION

### ENTERTAINMENT

Jennifer Berry or Todd Reynolds  
861 Barclay drive  
Abingdon, VA 24210

### RENTAL BOOTHS

Gary Dutton  
P O Box 711  
Abingdon, VA 24212  
276-623-1112

Mike Overstreet

276-356-3129

### AG OLYMPICS

Mary Jo Alexander  
Phone: 276-944-4366  
washingtoncofairlivestock@ymail.com

### MARKET HOGS, POULTRY & RABBITS

Phil Blevins & Crystal Peek  
Washington County Extension  
234 W Valley Street, Suite B  
Abingdon, VA 24210  
Phone: 276-676-6309

### HOME ECONOMICS

Crystal Peek  
234 W Valley Street, Suite B  
Abingdon, VA 24210  
Phone: 276-676-6309

### CROPS

Phil Blevins & Lisa Little  
234 W. Valley Street, Suite B  
Abingdon, VA 24210  
Phone: 276-676-6309

### PAGEANTS

Debbie Icenhour  
327 Pinehurt Court  
Abingdon, VA 24211  
Phone: 276-628-4416

### PARADE

Gayle Lawson  
367 Bough Lane, Apt # 5  
Abingdon, VA 24210  
Phone: 276-623-4300

### LOCAL TALENT

Todd Reynolds  
P O Box 1402  
Abingdon, VA 24212

### CATTLE, OPEN GOATS & OPEN SHEEP

Mary Jo Alexander  
Phone: 276-944-4366  
washingtoncofairlivestock@ymail.com

### JR. LAMBS & JR. MARKET GOATS

(VA Showmasters Circuit Show)  
Natalie Blevins  
Phone: 276-356-3553

### GREASED PIG RUN

Mary Jo Alexander  
Phone: 276-944-4366  
washingtoncofairlivestock@ymail.com

### YOUTH EXHIBITS

Crystal Peek  
234 W Valley Street, Suite B  
Abingdon, VA 24210  
Phone: 276-676-6309

### HORSE SHOW

Connie Reynolds  
24115 Brumley Gap Road  
Abingdon, VA 24210  
276-628-7619

Angie Anderson

Phone: 26-356-8700

### PET SHOW & FUN MATCH

Mindy McCroskey  
Phone: 276-739-3245



*Thank you for 70 years  
of family fun and  
fellowship at the  
Washington County Fair!*



## Wednesday, September 11, 2019

9:30am	Pre-School and Kindergarten Tours Sponsored by <b>Food City</b>
10:00am	Petting Zoo (F) Sponsored by <b>Ballad Health - Johnston Memorial Hospital</b> and <b>First Bank &amp; Trust</b>
11:00am	NoJoe & TooT's Clown Circus (OS) Sponsored by <b>Eastman Credit Union</b> and <b>Washington County Farm Bureau</b>
4:00pm	Doors Open
6:00pm	Open Goat Show Sponsored by <b>Southern States Bristol Cooperative</b> Open Breeding Sheep Show Open Hair Sheep Show
6:00pm	Tractor Pull Sponsored by <b>Virginia Electric Supply</b>
6:00pm	Petting Zoo (F) Sponsored by <b>Ballad Health - Johnston Memorial Hospital</b> and <b>First Bank &amp; Trust</b>
6:30pm	Local Entertainment (A) The Local Band
7:00pm	NoJoe & TooT's Clown Circus (OS) Sponsored by <b>Eastman Credit Union</b> and <b>Washington County Farm Bureau</b>
8:00pm	Cody Johnson (OS) Sponsored by <b>Farm Credit</b>
9:30pm	NoJoe & TooT's Clown Circus (OS) Sponsored by <b>Eastman Credit Union</b> and <b>Washington County Farm Bureau</b>

Thursday, September 12, 2019

9:30am	Pre-School and Kindergarten Tours Sponsored by <b>Food City</b>
11:00am	NoJoe & TooT's Clown Circus (OS) Sponsored by <b>Eastman Credit Union</b> and <b>Washington County Farm Bureau</b>
4:00pm	Doors Open
5:00pm	Virginia Egg Council
5:30pm	4-H Youth Poultry Show (E)
6:00pm	Carnival Opens (H)
6:00pm	Petting Zoo (F) Sponsored by <b>Ballad Health - Johnston Memorial Hospital</b> and <b>First Bank &amp; Trust</b>
6:00pm	Dairy Night Food Event
6:00pm	Local Celebrity Cow Milking Contest
6:30pm	Local Entertainment (A) Simplicity Dance Team
7:00pm	Horse Show Speed Events
7:00pm	NoJoe & TooT's Clown Circus (OS) Sponsored by <b>Eastman Credit Union</b> and <b>Washington County Farm Bureau</b>
8:00pm	4-H Poultry Auction (E) - Buyers Welcome
8:00pm	Brent Cobb (OS)
9:30pm	NoJoe & TooT's Clown Circus (OS) Sponsored by <b>Eastman Credit Union</b> and <b>Washington County Farm Bureau</b>

## REGISTERED/COMMERCIAL GOAT SHOW

**SHOW DATE:** Wednesday, September 11, 2019 at 6:00p.m.

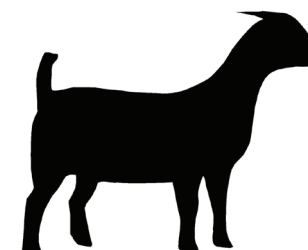
**GOAT SHOW MANAGERS:** Mary Jo Alexander & Kelly Thomas

### RULES FOR DAIRY/PYGMY GOATS:

1. Exhibitor must be able to control and handle goat while exhibiting the goat in a class.
2. Goat must be clean and presentable during entire Fair.
3. Goat Committee reserves the right to determine classes according to entry numbers.
4. Only does and wether goats are eligible to show.
5. Any questionable health problems or apparent lumps will be referred to the Goat Committee and/or attending veterinarian. Animals with obvious abscesses will be asked to leave the fairgrounds.
6. Stall/pen spaces will be assigned by the Goat Committee according to entry numbers and breeds.
7. All exhibitors must fill out an entry form completely and return the form to the Washington County Extension Office no later than September 1, 2019.
8. Goat committee reserves the right to cancel, add and combine classes as they see fit.
9. Premium checks will be written to the owner of the goats as written on entry form.
10. A minimum of 6 goats are required to hold a breed show for the breeds not listed. If a breed other than the breeds listed does not meet the minimum requirement, these goats will show in class designated by the committee.
11. Goats will be released at 10:00 p.m. on Thursday, September 12, 2019. Violation of this rule will result in a forfeiture of premiums.
12. Entry number will be issued for each Goat shown. Exhibitors are to wear the entry number to the show ring for their respective goats.
13. All decisions made by the Goat Show Committee are final.

### SHOWMANSHIP (Premiums & ribbons & trophy or medallion):

- A. Novice Showmanship – Class open to children 3-9 years old. \*
- B. Junior Showmanship – Class open to youth under 14 years. \*
- C. Senior Showmanship – Class open to youth 14-19 years. \*
- D. Costume Class – open to all youth 3-19 years - Ribbons



### CLASSES:

#### DAIRY GOATS

1. Milkers under 2 years of age
2. Milkers 2 years and older
3. Grand & Reserve Milker
4. Junior Kids 6 months and younger
5. Senior Kids 7-12 months
6. Dry Yearling (never freshened) under 24 months of age
7. Grand and Reserve Junior Doe

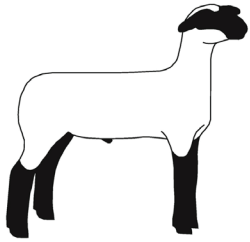
#### PYGMY GOATS

8. Yearling kids – 12-23 months of age
9. Does – 2 years and older
10. Grand & Reserve Doe
11. Junior kids 6 months and younger
12. Senior kids 7-12 months of age
13. Grand & Reserve Junior Doe

## DEPARTMENT C

## Open Goats and Open Sheep

### REGISTERED BREEDING SHEEP OPEN SHOW



**SHOW DATE:** Wednesday, September 11, 2019 at 6:00p.m.

**SHOW ORDER AS FOLLOWS:**

Registered Breeding Sheep -

immediately following the Open Goat Show

Hair Sheep -

immediately following Registered Breeding Sheep

### RULES FOR REGISTERED BREEDING SHEEP OPEN SHOW

1. Sheep must be owned by the exhibitor. Ownership of sheep may be joint with an immediate family member, provided the exhibitor's name is found on the certificate. For sheep with joint ownership, entries may be made in the name of only one Exhibitor (this also applies to pairs/group classes).
2. Registered sheep of any breed are eligible. Sheep must be recorded with, and have registration papers issued from a national breed association. All sheep must be registered in the flock books of their respective breed and carry them corresponding flock tag and/or tattoo.
3. Breeds must have a minimum of 10 sheep from at least 3 exhibitors to qualify for a breed show. Breeds not meeting this requirement will be exhibited in the All Other Breeds (AOB) division. The AOB division may be split into two divisions, wool breeds and meat breeds, as entry numbers warrant.
4. The date of birth must be verified for all entries by their registration papers.
5. Sheep exhibited in the registered breeding sheep open show division may not be shown in the market lamb division or in the commercial ewe lamb division.
6. Sheep are to be exhibited in the fleece appropriate for the respective breed. Sheep may be slick sheared, and if fitted it is recommended they not have more than one inch of wool on any part of their body. Wool breeds should be shown with fleece presentation and length appropriate for their respective breed.
7. The use of coloring agents is prohibited.
8. All exhibitors must check their entries and registration papers with show officials by 6:00 p.m. on Wednesday, September 11, 2019.
9. Classes with more than 20 head may be split at the discretion of show officials.
10. Exhibitors are limited to a total of two premiums per class in individual classes, and one premium in pair and group classes.
11. Open sheep will be released at 10:00 p.m. on Wednesday night. Removing animals before release time will result in a forfeiture of premiums.

### CLASSES:

(for registered breeding sheep open show)

1. Ram Lamb
2. Yearling Ram
3. Grand and Reserve Champion Ram - ROSETTE
4. Ewe Lamb
5. Pair of Ewe Lambs
6. Yearling Ewe
7. Pair of Yearling Ewes
8. Grand and Reserve Champion Ewe - ROSETTE

### CLASSES:

(for hair sheep open show)

1. Ewe lamb
2. Ram lamb
3. Market lamb (must be castrated male or ewe lamb. - If ewe lamb is shown as Market lamb she cannot show in ewe lamb class or vice versa.)

### PREMIUMS

(FOR REGISTERED BREEDING SHEEP OPEN SHOW & HAIR SHEEP OPEN SHOW):

1st = \$10 2nd = \$8 3rd = \$6 4th = \$4

**Friday, September 13, 2019**

12:00pm

1-3pm

1:00pm

1:00pm

2:00pm

2:00pm

3:00pm

4:00pm

4:00pm

6:00pm

6:30pm

7:00pm

8:00pm

9:30pm

Doors Open

School Day (Free Admission Until 3pm for Students/School Employees) Adults \$5 (1:00-3:00pm)

Carnival Opens (H)

Petting Zoo (F) Sponsored by **Ballad Health - Johnston Memorial Hospital** and **First Bank & Trust**

School Day Sponsored by **Food City**

NoJoe & TooT's Clown Circus (OS) Sponsored by **Eastman Credit Union** and **Washington County Farm Bureau**

School Day Talent Show (A)

Beef Cattle Show (E) Sponsored by **First Bank & Trust**, **Meade Tractor**, and **Southern States Bristol Cooperative**

NoJoe & TooT's Clown Circus (OS) Sponsored by **Eastman Credit Union** and **Washington County Farm Bureau**

Truck Pull Sponsored by **Orange Zone Rental**

Local Entertainment (A) CB and the 10-4's Band  
NoJoe & TooT's Clown Circus (OS) Sponsored by **Eastman Credit Union** and **Washington County Farm Bureau**

Confederate Railroad (OS)

NoJoe & TooT's Clown Circus (OS) Sponsored by **Eastman Credit Union** and **Washington County Farm Bureau**

\* Unlimited Carnival Rides - \$22 per person 1:00-6:00pm

\* Per Ticket Price - 6:00pm to Closing

## Saturday, September 14, 2019

7-9am	Weighing and Entering Junior Market Lambs, Junior Market Goats, Junior Ewe Lambs (E)
9:00am	Open Horse Show
11:30am	Junior Lamb Show, Junior Commercial Ewe Lamb Show, Junior Market Goat Show Sponsored by <b>Farm Credit</b>
12:00pm	Doors Open
12:00pm	Lamb Industry Event
12:00pm	Petting Zoo (F) Sponsored by <b>Ballad Health - Johnston Memorial Hospital</b> and <b>First Bank &amp; Trust</b>
12:00pm	Pet Show
1:00pm	Carnival Opens (H)
2:00pm	Fun Match
2:00pm	NoJoe & TooT's Clown Circus (OS) Sponsored by <b>Eastman Credit Union</b> and <b>Washington County Farm Bureau</b>
3:00pm	Adult Talent Show
4:00pm	NoJoe & TooT's Clown Circus (OS) Sponsored by <b>Eastman Credit Union</b> and <b>Washington County Farm Bureau</b>
7:00pm	Demolition Derby Sponsored by <b>Berry Home Center</b>
7:00pm	NoJoe & TooT's Clown Circus (OS) Sponsored by <b>Eastman Credit Union</b> and <b>Washington County Farm Bureau</b>
8:00pm	Restless Heart Sponsored by <b>Highlands Union Bank</b>
8:00pm	Youth Greased Pig Scramble
9:30pm	NoJoe & TooT's Clown Circus (OS) Sponsored by <b>Eastman Credit Union</b> and <b>Washington County Farm Bureau</b>

\* Unlimited Carnival Rides - \$22 per person 1:00pm-6pm

\* Per Ticket Price - 6:00pm to Closing

## JUNIOR COMMERCIAL EWE LAMB SHOW

**JUDGE:**

Ryan Morteysdt, Lynville, Iowa

**SHOW DATE:**

Saturday, September 14, 2019

Begins immediately following the Market Lamb Show



### RULES FOR COMMERCIAL EWE LAMBS:

1. Open to youth exhibitors to 19 years of age
2. Lambs exhibited in the commercial ewe lamb division may be shown in the market lamb division for additional entry fee.
3. Commercial ewe lambs will be weighed during the market lamb weigh-in and classes will be divided according to weight. Re-weighs will not be allowed. Class weight will be made at the discretion of the show officials. Class winner and 2nd places for the overall Grand Champion and Reserve Champion honors.
4. In order for an exhibitor to compete in the Junior, Intermediate and Senior Showmanship Divisions, an exhibitor is required to use their own animal that is registered in their name in the show. The pee-wee showmanship division is the only division that is exempt from this rule. Any violators will be disqualified.
5. All Showman must be registered exhibitors in the show and show their own animals. Unless in the event of an exhibitor having 2 or more animals in the same class and/or division/champion drives. In that event, only another registered exhibitor may assist the showman.
6. Lambs will be accepted starting on Friday at noon and until 9:30 a.m. on Saturday morning. Weigh in for market lambs and commercial ewe lambs will be from 8:00 a.m. until 10:00 a.m.
7. Lambs will be released at 7:00 p.m. on Saturday night.

### SHOW ORDER:

1. Commercial Ewe Lamb Classes – these are ewe lambs born on or after January 1, 2019. Classes – class weight breaks assigned after weigh in by show officials.
2. Commercial Ewe Lamb Champion Drive – all first and second place class winners in the commercial ewe lamb classes will compete for the Champion and Reserve Champion Commercial Ewe Lamb.

### PREMIUMS:

Market Lambs, Commercial Ewes, Market Goat - Class Placings Paid Out for 1st, 2nd, 3rd, 4th, and 5th.

#### Market Lambs Only Division Premiums

Light Weight Champion	\$50
Light Weight Reserve	\$25
Middle Weight Champion	\$50
Middle Weight Reserve	\$25
Heavy Weight Champion	\$50
Heavy Weight Reserve	\$25

#### Champion Premiums

Grand Champion Market Lamb	\$300
Reserve Champion Market Lamb	\$150
Grand Champion Commercial Ewe	\$150
Reserve Champion Commercial Ewe	\$100
Grand Champion Market Goat	\$150
Reserve Champion Market Goat	\$100

### ONLINE ENTRY FORM LINKS:

**Dairy/Pygmy Goat Show:** [www.surveymonkey.com/r/DairyandPygmyGoatShow2018](http://www.surveymonkey.com/r/DairyandPygmyGoatShow2018)

**Beef Show:** <http://www.surveymonkey.com/r/BeefShow2018>

**Open Registered Breeding Sheep and Open Hair Sheep:**

[www.surveymonkey.com/r/OpenRegisterBreedingSheepandOpenHairSheep2018](http://www.surveymonkey.com/r/OpenRegisterBreedingSheepandOpenHairSheep2018)

**Market Lambs, Commercial Ewe, Market Goats:**

See Entry form in fair book or printable form on fair website -- **NO ENTRY ONLINE**

## MARKET LAMB SHOW

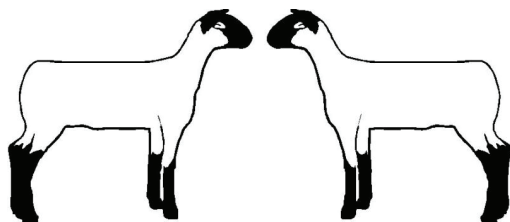
**JUDGE:** Ryan Morteydt, Lynville, Iowa  
**SHOW DATE:** Saturday, September 14, 2019  
 Begins immediately following the Market Goat Show

### RULES FOR MARKET LAMBS:

1. Open to youth exhibitors to 19 years of age.
2. Market lambs may be ewe and/or wether lambs. Wethers must show no evidence of testicular tissue and be completely healed from castration.
3. Ewe lambs exhibited in the market lamb division CAN BE shown in the commercial Ewe lamb division for an additional entry fee.
4. Market lambs will be weighed and classes will be divided according to weight. Re-weighs will not be allowed. Class weight breaks and division assignments (light weight, middle weight, and heavy weight) will be made at the discretion of the show officials. Division champions and reserves will compete for the Grand Champion and Reserve Champion honors.
5. In order for an exhibitor to compete in the Junior, Intermediate and Senior Showmanship divisions, an exhibitor is required to use their own animal that is registered in their name in the show. The pee-wee showmanship division is the only division that is exempt from this rule. Any violators will be disqualified.
6. All Showman must be registered exhibitors in the show and show their own animals. Unless, in the event of an exhibitor having 2 or more animals in the same class and/or division/champion drives. In that event, only another registered exhibitor may assist in the showman. Any violators will be disqualified.
7. Lambs will be accepted starting on Friday at noon and until 9:30 a.m. on Saturday morning. Weigh in for lambs will be on Saturday morning from 8:00 a.m. until 10:00 a.m.
8. Lambs will be released at 7:00 p.m. on Saturday night.

### SHOW ORDER:

1. Senior Showmanship – For market lamb and commercial ewe lamb exhibitors.  
Exhibitors – 16 to 19 years of age on September 30 of current year.
2. Intermediate Showmanship – For market lamb and commercial ewe lamb exhibitors.  
Exhibitors 13 to 15 years of age on September 30 of current year.
3. Junior Showmanship – For market lamb and commercial ewe lamb exhibitors.  
Exhibitors 9 to 12 years of age on September 30 of current year.
4. Pee Wee Showmanship – For market lamb and commercial ewe lamb exhibitors.  
Exhibitors 8 years of age and younger on September 30 of current year.
5. Market Lamb Classes – class weight breaks assigned after weigh in by show
6. Division Champion Drives – these will be assigned with a goal of having approximately the same number of lambs in each division – There will be Light Weight Champion, Middle Weight Champion, Heavy Weight Champion, and Light Weight Reserve, Middle Weight Reserve, Heavy Weight Reserve
7. Grand Champion and Reserve Champion Drive



## YOUTH ACTIVITIES

### GREASED PIG SCRAMBLE

**WHEN:** Saturday, September 14, 2019  
**TIME:** 8:00p.m.  
**WHERE:** Livestock/Events Building  
**CONTACT:** Mary Jo Alexander (276) 944-4366  
*\*Calls after Sept. 8, 2019, may not be returned.*  
 washingtoncofairlivestock@ymail.com

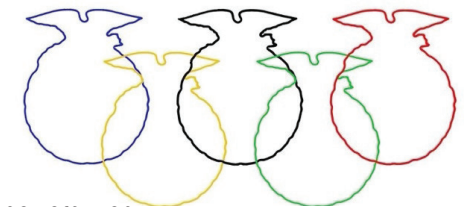


**\* Open to children ages 2-12 \***

1. Contestants and parents must agree to assume responsibility for any injuries or damages resulting to the contestants from the contest. **PARENTS OR GUARDIANS WILL BE REQUIRED TO SIGN A RELEASE FORM FOR THE CHILD TO PARTICIPATE AND THE PARENT OR GUARDIAN WILL BE REQUIRED TO STAY IN A DESIGNATED AREA WHILE THE CHILD PARTICIPATES SO THAT THE CHILD MAY GO DIRECTLY TO THE PARENT/GUARDIAN AFTER THE EVENT.**
2. Trophies will be awarded to the winner.
3. Pigs will weigh approximately 15-80 pounds each.
4. Entrants must catch the pig and hold it for 30 seconds to win. Younger children will be asked to remove a ribbon from the back of the pig. Depending on the number of entrants, groups will be divided into further subdivisions of age. All decisions of the judge will be final.
5. Fair reserves the right to cancel this contest due to weather or extenuating circumstances. The number of participants may be limited depending on number of entries.

### AG OLYMPICS

**WHEN:** Tuesday, September 10, 2019  
**TIME:** 6:00p.m.  
**WHERE:** Livestock/Events Building  
**CONTACT:** Mary Jo Alexander (276) 944-4366  
*\*Calls after Sept. 10, 2019, may not*  
 washingtoncofairlivestock@ymail.com



1. Open to 4-H and FFA members who have not reached their 19th birthday as of January 1, 2019.
2. Teams of four. **Each school** (regardless of number of FFA chapters) **will be limited to three teams.**
3. Each team will be asked to perform tasks as a group (i.e. hay stacking, tug of war).
4. Teams will choose members to perform tasks as individuals (i.e. milk chugging, cow pie throwing).
5. Number of teams may be limited according to participation.
6. Events and scoring sheets will be available the day of the games.
7. Prizes will be awarded.

# PET SHOW AND FUN MATCH

**WHEN:** Saturday, September 14, 2019  
**TIME:** Pet Show 12:00p.m.  
 Fun Match 2:00p.m.  
**CONTACT:** Mindy McCroskey (276) 739-3245



Pet Show sponsored by VCA Highlands Animal Hospital  
 Fun Match sponsored by Cherokee Springs Obedience & Grooming  
 Ribbons for all and special prizes to the winners of the classes!  
 Come join the fun!

## PET SHOW

DOGS	CATS	MISCELLANEOUS
Largest	Largest	Largest
Smallest	Smallest	Smallest
Best Looking	Most Beautiful	Most Beautiful
Most Unusual	Costume	Costume
Costume		

## FUN MATCH (Dog Show)

Costume	Herding
Hound	Non-Sporting
Sporting	Terrier
Toy	Working
Mixed Breeds	Best in Match
	(one place awarded)

The Pet Show is open to children 2-19 years of age, accompanied by adult.  
 The Fun Match is open to children and adults who are able to handle their dog unassisted.

## RULES:

1. All pets must be restrained by a leash, cage, or other means of restraint.
2. All pets must be healthy and have up to date vaccinations as required by Washington County and the Commonwealth of VA. All owners will clean up after their pets and relieve them in non-public areas.
3. Fair reserves the right to cancel or combine classes. Number of participants may be limited depending on number of entries.
4. **Owners are responsible for the actions of their pets.** Animals which are deemed aggressive and unmanageable by the Pet Show/Dog Show Committee will be asked to leave the fairgrounds.
5. **Pets are deemed the responsibility of their owner/handler.** The Washington County Fair grounds and its volunteers and staff assume no liability for injury to persons or pets by pets. Please keep your pets at a safe distance from other pets.
6. **Exhibitors will pay normal ticket price to enter the fairgrounds and the pet(s) will be admitted at no charge with the exhibitor. Pet will be issued a special pass to designate the pet as being a participant in the fair.**

**\*ONLY PETS PARTICIPATING IN THE PET SHOW AND FUN MATCH WILL BE ALLOWED TO ENTER THE FAIRGROUNDS.**

## DEPARTMENT B

## Junior Sheep & Market Goats

**SHOW DATE:** Saturday, September 14, 2019 at 12:00 noon  
**SUPERINTENDENT:** Natalie Blevins  
**ASST. SUPERINTENDENTS:** Phil Blevins, Crystal Peek, Kate Belcher, Melissa Belcher, Ed Blevins, Hayley Blevins, and Kristen Blevins White

## JUNIOR MARKET GOAT SHOW

**JUDGE:** Ryan Morteysdt, Lynville, Iowa  
**SHOW DATE:** Saturday, September 14, 2019 at 12:00 noon

## RULES FOR MARKET GOATS:

1. Open to youth exhibitors to 19 years of age.
2. Market goats must be of the meat type breed.
3. Goats may be wethers or does and under one year of age. Wethers must show no evidence of testicular tissue and be completely healed from castration.
4. Wethers must be dehorned, or have horns blunted.
5. Market goats will be weighed and classes will be divided according to weight. Re-weighs will not be allowed. Class weight breaks will be made at the discretion of the show officials.
6. First and Second place class winners will compete for the Grand Champion and Reserve Champion honors.
7. All showman must be registered exhibitors in the show and show their own animals. Unless in the event of an exhibitor having 2 or more animals in the same class and/or division/champion drives. In that event, only another registered exhibitor may assist the showman.
8. In order for an exhibitor to compete in the Junior, Intermediate and Senior. Showmanship divisions, an exhibitor is required to use their own animal that is registered in their name in the show. The pee-wee showmanship division is the only division that is exempt from this rule. Any violators will be disqualified.
9. Goats will be accepted starting on Friday at noon and until 9:30 a.m. on Saturday morning. Weigh in for goats will be on Saturday morning from 8:00 a.m. until 10:00 a.m.
10. Goats will be released at 7:00 p.m. on Saturday night.

## SHOW ORDER:

1. Senior Showmanship – Exhibitors 16 to 19 years of age. On September 30 of current year.
2. Intermediate Showmanship – Exhibitors 13 – 15 years of age on September 30 of current year.
3. Junior Showmanship – Exhibitors 9 – 12 years of age on September 30 of current year.
4. Pee-Wee Showmanship – Exhibitors 8 years of age and younger on September 30 of current year.
5. Market Goat Classes – Class weight breaks assigned after weigh in by show officials.
6. Grand Champion and Reserve Champion Drive.

## COWS

25. Cow/calf\* (Natural Calf at Side) Calved after 1/1/19  
 26. Ernest & Alberta Copenhaver Memorial Supreme & Reserve Supreme Bull Awards  
 27. Ernest & Alberta Copenhaver Memorial Supreme & Reserve Supreme Heifer Awards  
 28. Old Timers Showmanship - Ages 20 & Over  
**\$10 cash entry before class begins. Winner takes total amount obtained from Old Timers Showman ship Entries.**

## FEEDER STEER RULES:

1. Cattle must be broke to tie and show at halter.
2. All General Livestock Rules apply.
3. Classes will be determined by show management upon entry.

### \* PREMIUMS \*

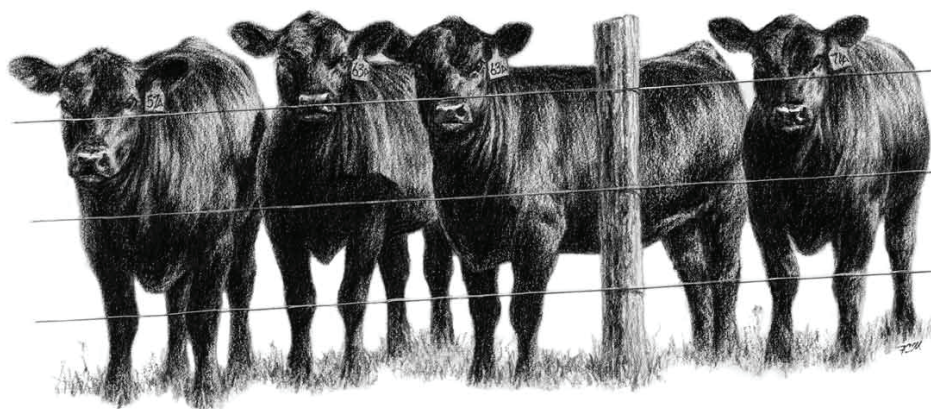
1st	2nd	3rd	4th	5th	6th	7th
\$20	\$15	\$10	\$6	\$5	\$4	\$3

### GRAND CHAMPIONS & RESERVE CHAMPIONS - FANCY ROSETTES

**Supreme Bull (Class #26) & Supreme Heifer (Class #27)**

**Grand to receive \$100**

**Reserve to receive \$75**



## YOUTH ARTS AND CRAFTS SCHEDULE

- ENTRY DATE:** Sunday, September 8, 2019; 2:00 p.m. – 6:00 p.m.
- JUDGING:** Monday, September 9, 2019; 9:00 a.m. – 2:00 p.m.
- CHECK OUT FOR ALL ITEMS:** Sunday, September 15, 2019; 1:00 p.m. – 3:00 p.m.
- Youth Committee:**  
 Hannah Barker, Gabe Barker, Katie Terry, Kaylee Arney, Kendall Sullins, Kate Belcher, Kelli Garrett, Cole Quesenberry, Layton Henry, Laken Minnick, Ashli Linkous, Burgin Peek, and Caitlyn Horton

## YOUTH EXHIBITORS

**Ages: 5 to 19 years old**

## YOUTH GENERAL RULES:

1. Exhibits must be made or grown by each individual exhibitor.
2. Exhibits must have been made after September 2018.
3. Exhibitor will be able to make only one entry per class.
4. Food items must be displayed on disposable plates in re-closeable clear plastic bag.
5. Awards may be withheld from any entry not worthy in the opinion of all the judges. We reserve the right to refuse items that are not "fair quality".
6. All decisions of the judges are final.
7. Committee will not be responsible for items not picked up at the designated check-out time.
8. Every possible care will be taken to protect items; however, the committee assumes no responsibility in case of loss or damage to exhibits. Only under these conditions are entries received.
9. Any youth entering 10 items will be awarded a one-day pass to the Fair.
10. Classes specifically for Youth shall be divided as follows:  
 Young Explorers - 5-8 years old  
 Jr. Division – 9 to 13 years old  
 Sr. Division – 14 to 19 years old
11. "Best of Show" Award will be given to entries deemed best overall in the following areas: Crafts, Youth Horticulture, Foods, and Clothing. Best of show may be awarded to any youth ages 5 to 19. Youth awarded this honor will receive an additional premium of \$5.00 and a weekly pass to the fair.
12. Best of Show winners need to pick up weekly passes at the main gate on Monday of the fair.

**DEPARTMENT A****Housing**

**PREMIUMS:** FIRST - \$3.00 SECOND - \$2.00 THIRD - \$1.00

**SECTION I - CRAFTS** (Ages: 5 to 19 years old)**CLASS:**

1. Room Improvement Article (no pillows)
2. Door Decoration
3. Art - Paintings (must be matted, no larger than 11x14)
4. Art - Crayons (coloring page only; no bigger than 8.5x11) (YE only)
5. Art - Pencil Drawing (#2 pencil or colored, no bigger than 8.5 x 11)
6. Photography (1 photograph; matting only, no frame, 4x6 to 8 x 10)
7. Collage (no larger than 11x14)
8. Canvas Painting - Unframed of any size.
9. Tin Punch
10. Jewelry - Earrings
11. Jewelry - Bracelets
12. Jewelry - Necklaces
13. Jewelry - Rings
14. Embroidery
15. Quilts & Quilted Items
16. Ceramic Items
17. Christmas Decoration
18. Counted Cross Stitch
19. Bead Art (no jewelry pieces)
20. Model (any kind)
21. Lego Art (must have theme & must be secured on board no bigger than 11 x 14)
22. Hobby Collections (must be in a container)
23. Woodworking (i.e. birdhouses, feeders, etc./woodcarving) 12 inches & smaller
24. Woodworking (i.e. birdhouses, feeders, etc./woodcarving) Larger than 12 inches
25. Something from Nothing (with description on index card)
26. Recycled Item (with description on index card)
27. Sew and Show pillows.
28. Pillowcases - Hand or Machine sewn
29. Purses
30. Leathercraft
31. Decorated Pumpkin (no carving or cutting; faces only)
32. Sand Art
33. Hair Accessory
34. Duct Tape Craft Item
35. Decorated Flip Flops
36. String Art
37. Mosaics
38. Miscellaneous

**DEPARTMENT A****Beef Cattle**

**SHOW DATE:** Friday, September 13, 2019 at 4:00p.m.

**BEEF SHOW MANAGERS:** Kelly Thomas, Mary Jo Alexander, Jason McCall, Gary Thomas, Bobby Thomas, Chad Thomas, Alan McCall, Sarah Scyphers  
*Honorary Committee Members:* Doris & Kenneth Worley

**BREEDS:** All beef breeds including commercial

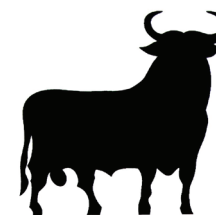
**CLASSES (to be shown in divisions by breed):****CHRIS JOHNSON MEMORIAL SHOWMANSHIP**

(\*Ribbons & premiums & trophy or medallion)

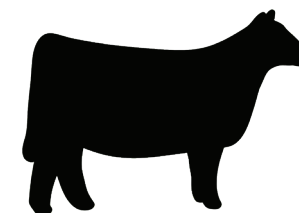
- 1A. Cow Buddies\* - For the Smallest Showman 0-5 years old \*\*
- 1B. Novice Showmanship\* - Class open to children 6-9 years old \*\*
2. Junior Showmanship\* -ages 9-11 years old as of day of show \*\*
3. Intermediate Showmanship\* -ages 12-14 \*\*
4. Senior Showmanship\* - ages 15-20 \*\*

**BULLS**

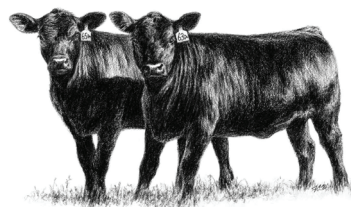
- |  |                         |
|--|-------------------------|
| 5. Junior Bull Calves*                     | Calved after 1/1/19     |
| 6. Winter Bull Calves*                     | Calved 11/1 to 12/31/18 |
| 7. Senior Bull Calves*                     | Calved 9/1 to 10/31/18  |
| 8. Late Summer Yearling Bulls*             | Calved 7/1 to 8/31/18   |
| 9. Early Summer Yearling Bulls*            | Calved 5/1 to 6/30/18   |
| 10. Late Junior Yearling Bulls*            | Calved 3/1 to 4/30/18   |
| 11. Early Junior Yearling Bulls            | Calved 1/1 to 2/28/18   |
| 12. Senior Yearling Bulls*                 | Calved 9/1 to 12/31/17  |
| 13. Senior Bulls                           | Calved 1/1 to 12/31/16  |
| 14. Grand Champion & Reserve Champion Bull |                         |

**HEIFERS**

- |  |                         |
|--|-------------------------|
| 15. Spring Heifer Calves*                    | Calved after 3/1/19     |
| 16. Junior Heifer Calves*                    | Calved 1/1 to 2/28/19   |
| 17. Winter Heifer Calves*                    | Calved 11/1 to 12/31/18 |
| 18. Senior Heifer Calves*                    | Calved 9/1 to 10/31/18  |
| 19. Late Summer Yearling Heifers*            | Calved 7/1 to 8/31/18   |
| 20. Early Summer Yearling Heifers*           | Calved 5/1 to 6/30/18   |
| 21. Late Junior Yearling Heifer              | Calved 3/1 to 4/30/18   |
| 22. Early Junior Yearling Heifers*           | Calved 1/1 to 2/28/18   |
| 23. Senior Yearling Heifers*                 | Calved 9/1 to 12/31/17  |
| 24. Grand Champion & Reserve Champion Heifer |                         |



15. Exhibitors will be responsible for cleaning area after checkout. Premiums will be withheld if area is not deemed to be reasonably clean by Livestock Committee.
16. Handler/owner will be held directly responsible for their animal's welfare and control.
17. All livestock entries shall be submitted in the proper form. **All Beef, Dairy, Goat and Sheep entries will be entered separately on designated form.** Entries not submitted in proper format will not be honored.
18. All animals will be subject to a health check concerning all State & Federal Health Requirements by a licensed veterinarian, State/Federal health official and/or other qualified individual as appointed by the Livestock Committee. If your animal is found to be unhealthy or harboring some stage of disease, your animal will be asked to leave the fairgrounds immediately for the benefit of other animals and exhibitors.
19. All blocking, fitting & clipping chutes will be located in area designated unless otherwise designated by livestock committee.
20. Each exhibitor will be issued 3 exhibitor passes, one trailer pass and one livestock vehicle pass. A MAXIMUM of 6 exhibitor passes and 1 vehicle pass will be issued per family. All passes will be mailed prior to fair opening. Additional passes must be requested from livestock committee person in charge and will be issued at their discretion.
21. **ALL livestock and equipment are to be unloaded at the back door near the wash racks. There will be no unloading allowed at the side door.**
22. All exhibitor trailers are required to park in designated areas behind the wash rack. Those with a livestock vehicle passes will park in a designated area outside of the gate. **Vehicle passes will be issued according to species of animal to be shown and will be valid in the barn parking area only for the designated time frame of that species being shown. Drivers must maintain a very slow speed in and around the barn area.**
23. **A livestock parking pass does not guarantee entrance to the fair. Each passenger must have an exhibitor and/or volunteer pass. Anyone not in possession of an exhibitor and/or volunteer pass will be sent to the main gate and must pay to enter the fair.**
24. **Absolutely NO vehicles are allowed to drive around or behind the barn after the fair opens at 4 p.m. Monday – Thursday and 12:00 noon Friday and Saturday. No exceptions.**
25. **Failure to follow livestock parking rules and/or misuse of exhibitor vehicle passes will result in withdrawal of parking privileges.**



## SECTION II – YOUTH HORTICULTURE (Ages: 5 to 19 years old)

**PREMIUMS:** FIRST - \$3.00 SECOND - \$2.00 THIRD - \$1.00

### RULES:

1. General rules apply to this section.
2. Plastic drink bottles (not glass) no larger than 16oz.
3. No class age division.

### CLASS:

1. Zinnias
2. Marigolds
3. Dahlias
4. Celosia
5. Petunia
6. Roses - Miniature
7. Roses - Standard
8. Asters
9. Potted Geranium
10. Dish Garden
11. Flowering Potted Plant - 8"-12"
12. Hanging Basket - Flowering
13. Potted Collection (Must Have at Least Two Varieties)
14. Theme Arrangement: "Let the Good Times Grow"
15. Potted Fairy Garden



## DEPARTMENT B

## Foods

**PREMIUMS:** FIRST - \$3.00 SECOND - \$2.00 THIRD - \$1.00

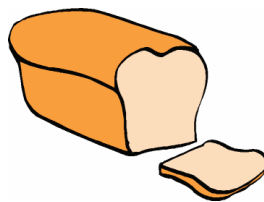
### RULES:

1. Items must be exhibited on paper plates in a re-closeable clear plastic bag.
2. Young Explorer, Junior, and Senior Division for all classes.
3. No food items are to be made from commercial mix.
4. Recipes must be submitted on an index card with entry.

### SECTION I - BREADS

#### CLASS:

1. 3 biscuits
2. 3 fruit muffins
3. Skillet Corn Bread (3 wedges)
4. 1/2 Yeast Loaf Bread
5. 3 slices Quick Bread



### SECTION II - COOKIES, CAKES, AND PIES

#### CLASS:

1. 3 Chocolate Chip Cookies
2. 3 Peanut Butter Cookies
3. 3 Sugar Cookies
4. 3 Oatmeal Cookies
5. 3 No Bake Cookies
6. 3 Brownies
7. 3 slices cake or 3 cupcakes -- Cook's Choice
8. 3 slices/pieces Gluten Free Cake or Brownie -- Cook's Choice
9. Decorated Cakes -- Judged on appearance only (mock forms okay)
10. 3 Decorated Cupcakes
11. 4 Cake Pops -- Presented on Styrofoam Form/Covered
12. Whole Pie -- Non-Refrigerated Variety
13. 3 Cookie Dessert Bars of Choice



### SECTION III - CANDY

#### CLASS:

1. 3 pieces of Chocolate Fudge
2. 3 pieces of Peanut Butter Fudge
3. 3 pieces of Miscellaneous (Cook's Choice)



## BEEF SHOW RULES

1. Registration papers must be available for all animals entered in breed shows. Animals one year of age or older (as of day of show) must have valid registration papers or proof that registration application with appropriate breed association has been made. If no registration is available, these animals will be placed in commercial classes. Tattoos will be checked on all registered animals.

2. Health Regulations- All out of state must comply with State and Federal Health Regulations and have the necessary paperwork with the animals at time of registration. **\*\*ALL OUT OF STATE CATTLE** entering the fairgrounds must have a 30-day Health Certificate issued by a licensed veterinarian or the animal will not be allowed on the fairgrounds.

3. All animals must be clean and in show condition prior to arrival at the Fair and kept preentable to be allowed to show.

4. Manure must be disposed of in designated area only.

5. Premiums will not be presented until stall area is cleaned and all bedding removed..

6. All blocking chutes will be located outside of the barn. **NO FITTING OF ANIMALS PERMITTED.** No adhesives, glues, or paint will be permitted. **ANY ANIMAL DETERMINED TO BE 'FITTED' MAY BE DISQUALIFIED FROM THE SHOW.**

7. All General Livestock Rules will apply - Please read these and be familiar with them as you will be expected to adhere to these rules.

8. All bulls over one year old require a nose lead.

9. **BEEF CATTLE** will be admitted Friday, September 13, 2019, between 8:00am & 5:00pm. **SHOW DATE** is Friday, September 13, 4:00pm. **RELEASED** after 10:00pm on Friday, September 13th. Removing cattle before show management dismisses will result in forfeiture of premiums.

10. A minimum of six (6) heifers is required to hold a breed show. If a breed does not meet the minimum requirements, those heifers will show in "Other Registered Beef Breeds."

11. Beef cattle entries are to be submitted on the form marked for beef cattle only -- no other livestock may be entered on this form. All incorrect form entries will not be honored.

12. If there are less than three (3) bulls in a breed show, these animals may be classed together as other registered beef breeds at the discretion of the show management.

13. No animal older than 39 months of age as of the date of the show will be admitted into the fairgrounds.

14. All animals admitted to the fairgrounds shall be registered for a class. No display cattle will be admitted unless otherwise designated by the show management.

**\* BEDDING WILL NOT BE PROVIDED BUT IS ALLOWED \***

An overview committee consisting of at least three people, generally recognized as knowledgeable of livestock management and exhibitions, are responsible for the administration of the Code of Conduct. Their decisions are final and not subject to appeal.

# ANIMAL EXHIBITOR CODE OF CONDUCT

This Code of Conduct is an agreement, formal or implied, between the participants and the management of this Fair. Its purpose is:

- To ensure the overall well-being of animal exhibited
- To ensure the use of commonly accepted practices in preparing and exhibiting animals for the show
- To maintain a safe and wholesome food supply
- To maintain the intent and integrity of animal competitions and displays for future generations

Animal exhibitors participating at this Fair agree to the following guidelines:

1. Animals must be transported to and from the Fair in accordance with all transport regulations and standards.
2. Intentional misrepresentation of an animal in any way including age of the animal, ownership, altering of pedigree, or other misinformation provided by the exhibitor is prohibited.
3. Animals must be treated and handled in a responsible manner. They will be fed and watered at least twice daily.
4. Treating an animal internally or externally with any substance or procedure used to artificially change the conformation, appearance, or handling characteristics of the animal for show is prohibited. This does not apply to accepted methods of clipping or combing an animal's hair.
5. The use of abusive showing and/or handling practices such as striking animals or administering an electrical shock to cause swelling or to affect the bracing behavior of an animal is prohibited.
6. Direct criticism or interference with the judge, show management, other exhibitors, breed representatives, or show officials before, during, or after a competitive event is prohibited.

**Any violation of this Code of Conduct will result in forfeiture of premiums and awards, disqualification, and probationary status and/or loss of eligibility for future competition at this Fair.**

**An overview committee consisting of at least three people generally recognized as knowledgeable of livestock management and exhibitions are responsible for the administration of this Code of Conduct. Their decisions are final and not subject to appeal.**

**\* BEDDING IS NOT PROVIDED BUT IS ALLOWED \***

## SECTION IV - CANNED FOODS

### RULES:

1. Entries must be in standard canning jars, and lids/rings must be on jar.
2. Young Explorers, Junior, and Senior Division for each fruit or vegetable.
3. All entries must have been canned by the exhibitor since October 2017.
4. No rust on lids or rims.
5. Please put entry card with item(s) canned.



### CLASS:

1. 1 quart or 1-pint fruit
2. 1 quart or 1-pint tomatoes (no juice)
3. 1 quart or 1-pint green beans
4. 1 quart or 1-pint sweet pickles
5. 1 quart or 1-pint dill type pickles.
6. 1 pint or ½ pint jelly (no apple butter)
7. 1 pint or ½ pint jam (no apple butter)
8. 1 pint or ½ pint apple butter
9. 1 pint or ½ pint Salsa
10. 1 pint or ½ pint miscellaneous

## DEPARTMENT C Clothing

### RULES:

1. Items must be secured on hangers.
2. General Rules apply to this section.

### PREMIUMS:

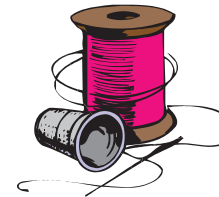
FIRST - \$3.00

SECOND - \$2.00

THIRD - \$1.00

### CLASS:

1. Apron
2. Vest
3. Shorts
4. Slacks
5. Blouse or Shirt
6. Skirt
7. Dress of choice
8. Jacket
9. Child's or Baby's Garment
10. Wool Garment (70% Wool)
11. Painted T-Shirt
12. Tie-dye Shirts
13. Crocheted or Knitted Article (example: Vest, Sweater, Scarf, etc.)
14. Appliqued Design Garment, Example: Heat Press (no purses)
15. Doll Cloths
16. Clothing Item made from alternative materials (example: duct tape or newspaper)
17. Themed Outfit (Shirt & Shorts/Pants) To illustrate theme and can be a decade or fair theme.



# FARM CROPS

**COMMITTEE:** Phil Blevins and Lisa Little

## GENERAL RULES:

1. All field crops, tobacco, and vegetables must be entered in the name of the producer on **SUNDAY, SEPTEMBER 8, 2019 between the hours of 2:00 p.m. and 6:00 p.m.**
2. Entries must be removed on **SUNDAY, SEPTEMBER 15th between the hours of 1:00 p.m. and 3:00 p.m.**
3. Only one entry per exhibitor in any class and all products must be of the current years' growth.
4. In any class where there is no competition, a blue ribbon will be awarded (if worth) and second money paid.
5. Any exhibit that deteriorates during the week may be discarded. Premiums will still be awarded and ribbons will be displayed.
6. Any person entering 10 items will be awarded a one-day pass to the Fair. Weekly passes will be given to Best of Show winner in each department.
7. Best of Show winners need to pick up weekly passes at main gate on Monday of the fair.

## DEPARTMENT A Field Crops and Vegetables

**PREMIUMS:** FIRST - \$3.00 SECOND - \$2.00 THIRD - \$1.00

## SECTION 1 - OPEN

1. Yellow or White Corn Stalks with ear – 3 stalks
2. Yellow or White Corn – 3 ears (shucked but shuck attached to ear)
3. Popcorn, any variety – 3 ears
4. Ornamental Corn – 3 ears
5. Irish Potatoes – 3 specimens
6. Irish Potato – largest – 1 specimen
7. Sweet Potatoes, 3 specimens
8. Red tomatoes, table type, slicing – 3 specimens
9. Yellow tomatoes, table type, slicing – 3 specimens
10. Small novelty tomatoes – 6 specimens
11. Peppers, sweet bell – 3 specimens
12. Peppers, banana – 3 specimens
13. Peppers, hot – 3 specimens
14. Green Beans, snap – 6 specimens
15. Pole Beans – 6 specimens
16. October Beans – 1 pint
17. Beets with tops – 3 specimens
18. Broccoli – 1 bunch
19. Carrots, with tops – 3 specimens
20. Chicken Eggs (1 dozen in carton)



**Beef Cattle** will be admitted Friday, September 13th between 8:00 a.m. & 3:00 p.m.

**SHOW DATE:** Friday, September 13th, 4:00 p.m.

Released after 10:00 p.m. on Friday, September 13th

**Jr. Market Lambs, Commercial Ewe lambs & Market Goats** will be admitted starting at noon on Friday, September 13th and until 9:30 a.m. on Saturday morning, September 14th

**SHOW DATE:** Saturday, September 14th at 12:00 noon.

Release time will be 7:00 p.m. on Saturday, September 14th.

4. All decisions rendered by show management and the Livestock Committee are considered final and are not subject to appeal.
5. Premiums will not be paid if livestock are taken out before scheduled time. If animal(s) must be released prior to scheduled release time, proof of entry in another livestock show and ten (10) days' notice is required. Adequate documentation from the other show/fair administration must be provided. Entry forms will not be accepted. Any other circumstances should be brought up to a Livestock Committee member for approval prior to the fair.
6. If Washington County Fair receipts are inadequate to pay premiums listed, the show management reserves the right to reduce premiums as may be found necessary.
7. Animals stall space, and alleyways must be kept clean and presentable.
8. Animals shown in Showmanship must be entered in another show class.
9. Washington County Fair Livestock Committee prefers that only the night watchman be in the exhibitor's building between the hours of 11:00 p.m. and 6:00 a.m. One caretaker per livestock exhibit may be granted permission to stay in exhibitor's area at the discretion of the Department Chairman. Said permission must be in writing.
10. Fair Officials reserve the right to limit the number of livestock exhibits in accordance with space.
11. The Livestock Committee reserves the right to ask that any unruly animal or exhibitor be removed from the grounds. All animals will be kept under control at all times by handler/owner.
12. ABSOLUTELY NO ALCOHOLIC BEVERAGES OR SMOKING IS PERMITTED IN LIVESTOCK BARN.
13. **All out of state animals must have a 30-DAY HEALTH CERTIFICATE issued by a licensed veterinarian in order to be allowed in the barn and to show. Any out of state animal not having a 30-day Health Certificate will not be allowed in the barn and will have to exit the fairgrounds. Exhibitors held responsible to understand and adhere to the rules for your specific livestock class and show. READ CAREFULLY AND COMPLETELY!**
14. **Wash rack is reserved for species in the show ring that day.** ie. Beef Cattle on Friday, Sheep and Goats on Saturday.

# YOUTH ACTIVITIES & LIVESTOCK DIVISION

## GENERAL LIVESTOCK RULES:

1. With the exception of Jr. Market Lambs, Jr. Commercial Ewe Lambs and Jr. Market Goats, all other animals must be pre-registered through the Washington County Extension Office or online no later than September 1st, with the exception of Jr. Market Lambs, Jr. Commercial Ewes and Jr. Market Goats (all others must be postmarked or faxed no later than 5:00 p.m. September 1st) on the Official Entry Form. No additions will be accepted after this date. No substitutions will be allowed after this date.

Email [washingtoncofairlivestock@gmail.com](mailto:washingtoncofairlivestock@gmail.com) for questions and correspondence concerning livestock entries and shows.



Join us on Facebook at "Washington County Fair Livestock Shows."

**We are now accepting online entries for the following shows!**

Dairy/Pygmy Goat Show: [www.surveymonkey.com/r/DairyandPygmyGoatShow2018](http://www.surveymonkey.com/r/DairyandPygmyGoatShow2018)  
 Beef Show: <http://www.surveymonkey.com/r/BeefShow2018>  
 Open Registered Breeding Sheep and Open Hair Sheep:  
[www.surveymonkey.com/r/OpenRegisterBreedingSheepandOpenHairSheep2018](http://www.surveymonkey.com/r/OpenRegisterBreedingSheepandOpenHairSheep2018)

**No online entry for Market Lambs, Commercial Ewe Lambs or Market Goats.**  
 See Entry form in fair book or printable entry form online.

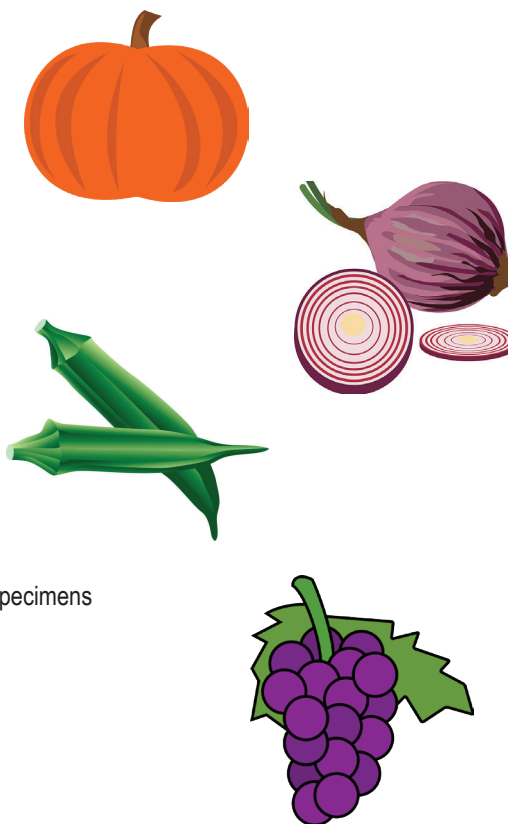
2. **HEALTH REGULATIONS: All livestock must comply with the following:**  
**All out of state animals are required to have a current 30-day Health Certificate issued by a licensed veterinarian. The Health Certificate(s) will be checked when the animal(s) are unloaded onto the fairgrounds. Any animal not having a Health Certificate will not be allowed into the barn will have to exit the fairgrounds.** Specific health requirements are listed under the appropriate livestock classification. **PLEASE READ ALL REQUIREMENTS FOR YOUR LIVESTOCK – THESE WILL BE STRICTLY ENFORCED.** Animals must be healthy, reasonably clean and free of disease and parasites. Any animal(s) found to be unhealthy or harboring parasites will not be allowed to unload at the fairgrounds and therefore must stay on the trailer or return home.

3. **4-H Poultry Exhibits** (pre-registered) will be admitted Thursday, September 12th at 5:00 p.m.  
 SHOW MANAGER: Crystal Peek – Washington County VA Extension Office  
**SHOW DATE: Thursday, September 12th, judging begins at 5:30 p.m.** – auction to follow conclusion of Goat Show. Released after 10:00 p.m. on Thursday, September 12th

**4-H Market Hog** (pre-registered) will be admitted Monday, September 10th between 2:00 p.m. & 6:00 p.m.  
 SHOW MANAGER: Crystal Peek – Washington County VA Extension Office  
**SHOW DATE: Monday, September 9th, 7:00 p.m.**  
 Released after 10:00 p.m. on Monday, September 10th

**Open Goats, Open Breeding Sheep & Open Hair Sheep** will be admitted Wednesday, September 11th between 8:00 a.m. & 5:00 p.m.  
**SHOW DATE: Wednesday, September 11th, 6:00 p.m.**  
 Released after 9:00 p.m. on Wednesday, September 11th.

21. Chestnuts – 5 specimens
22. Sweet Corn, untrimmed, in shuck – 3 ears
23. Cucumber, slicing – 3 specimens
24. Cucumber, pickling – 3 specimens
25. Yellow onion – 3 specimens
26. Red Onions – 3 specimens
27. White Onions – 3 specimens
28. Pumpkin, any variety, good quality – 1 specimen
29. Pumpkin, largest – 1 specimen
30. Pumpkins, Jack-O-Lantern Type – 1 specimen
31. Squash, any variety, good quality – 1 specimen
32. Gourd, ornamental display – 3 or more
33. Gourd, large type – 1 specimen
34. Okra – 3 pods
35. Squash, winter type – 1 specimen
36. Summer squash – 3 specimens
37. Grapes – 3 bunches
38. Sunflower, good quality, 1 head
39. Vegetable plate, exhibitor's choice – 5 or more specimens
40. Watermelon – 1 specimen
41. Cantaloupe – 1 specimen
42. Honey with comb
43. Honey strained
44. Miscellaneous
45. Hay, alfalfa – 1 bat in clear plastic bag
46. Hay, orchard grass – 1 bat in clear plastic bag
47. Hay, Timothy – 1 bat in clear plastic bag
48. Hay, mixed grass – 1 bat in clear plastic bag



## SECTION II - YOUTH

### RULES:

Classes are the same as above for youth under age 18 as of day of show.

**PREMIUMS:** FIRST - \$3.00 SECOND - \$2.00 THIRD - \$1.00  
 (to be paid in addition to ribbons)

### DEPARTMENT B

### Burley Tobacco

**PREMIUMS:** FIRST - \$25.00 SECOND - \$15.00 THIRD - \$5.00  
 (to be paid in addition to ribbons)

### CLASS:

1. Stalks, 3 green, 2019 crop - Fresh cut



# ADULT HOME ECONOMICS DEPARTMENT

(Ages 19 and Older)

**CHECK IN TIME:** Sunday, September 8, 2019; 2:00 p.m. – 6:00 p.m.

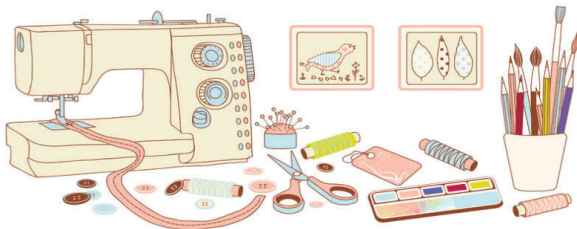
**JUDGING:** Monday, September 9, 2019; 9:00 a.m. – 2:00 p.m.

**CHECK OUT FOR ALL ITEMS:** Sunday, September 15, 2019; 1:00 p.m. – 3:00 p.m.

## GENERAL RULES:

**PLEASE NOTE CHANGES THROUGHOUT THIS DEPARTMENT!**

1. Exhibitors will be allowed to make only one entry per class.
2. Entries must be made in the name of the person doing the work.
3. Items must have been made in the past two years.
4. No blue ribbon winners in previous Fairs may be entered.
5. Every possible care will be taken to protect items; however, the committee assumes no responsibility in case of loss or damage to exhibits. Only under these conditions are entries received.
6. Items deemed soiled or otherwise not acceptable by the department committee may be refused. Items must be in new or "like new" condition.
7. Awards will be given only as the judges consider them worthy. Judges decision will be final.
8. Committee will not be responsible for items not picked up at the designated check-out time.
9. Definition of Kit – a creative collection of materials prepared by a person or company, etc. which contains necessities to complete a project by them and made into a kit.
10. Awards will be given to the FCE club with the largest number of creditable exhibits. FIRST - \$15.00; SECOND - \$10.00; THIRD - \$8.00. Score system used: Blue ribbon – 5; Red Ribbon – 4; White Ribbon – 3; Entry – 1. These awards are sponsored by the Washington County FCE Clubs. Club name must be noted upon entry with fair officials for credit to be given.
11. Any person entering 10 items in the Adult Home Economics Department will be awarded a one-day pass to the Fair. Weekly passes will be given to Best of Show winner in each department.
12. Entry tags are available at the fairgrounds during Sunday registration only. For your convenience and to save time, it is permissible to use pre-printed address labels when filing out your entry tags.
13. No entries will be accepted from anyone under the age of 19.
14. Best of Show winners need to pick up weekly passes at main gate on Monday of the fair.



# Livestock

**Dairy Cattle**  
**Beef Cattle**  
**Sheep**  
**Goats**  
**Poultry**  
**Hogs**

# SAMPLE FAIR ENTRY TAG

**ENTRY TAG**

No. 4298

No. \*Leave Blank\*

Division Adult Home Ec

Class 26-Canned Foods

Entry Bread and Butter

Pickles

\_\_\_\_\_

Name IMA CHICK

1234 Main Street

Address Anytown, VA 12345

-----

**CLAIM CHECK**

Property Surrendered Only  
On Return of This Check

DO NOT REMOVE

No. 4298

To BE Removed by Fair Personnel

**(Sample tag taken from Adult Home Economics Department.  
Please refer to fair book for correct entry information in  
your department).**

## DEPARTMENT A

## Crafts

**PREMIUMS:** FIRST - \$3.00 SECOND - \$2.00 THIRD - \$1.00

**All general rules and regulations will apply regarding events.**

### CLASS:

1. Pieced bed quilt (non-long arm quilted) \*\*
2. Pieced bed quilt (long arm machine quilted) \*\*
3. Cotton pieced bed quilt (must be hand quilted) \*\*
4. Appliqué bed quilt (appliqué must be dominant technique) \*\*
5. Novelty bed quilt I (embroidery, cathedral window cross-stitch) \*\*
6. Novelty bed quilt II (tied/tacked, textile painted, pre-printed, T-shirt, yo-yo)\*\*
7. Small bed quilt (throws, lap, crib)\*\*
8. Quilted Bed Runner (no table runners)
9. Miscellaneous bed quilt (any bed quilt item not included above)
10. Quilted wall hanging (24" or under on all sides)
11. Quilted wall hanging (over 24" on any side)
12. Non-traditional quilted wall hanging (pictorial, painted, beaded)
13. Quilted household articles (table runners, place mats)
14. Quilted garments/accessories (not including tote bags)
15. Quilted tote bags
16. Quilted purses
17. Covered Clothesline (fabric bowls and fabric articles)
18. Crocheted baby afghans
19. Crocheted afghans - other
20. Adult crocheted garments
21. Baby crocheted garments
22. Crochet article other
23. Adult knitted items
24. Child's knitted items
25. Knitted afghan
26. Felted article
27. Needlepoint article
28. Needlepoint on plastic
29. Embroidery Article
30. Counted cross stitch – other items (no pillows)
31. Stitchery from kit other than those listed
32. Aprons
33. Sewed items – garments
34. Sewed dolls and toys
35. Sewed doll cloths
36. Sewed item – children's garment
37. Sewed items – non-garments
38. Painted fabric garments
39. Appliqued' garments
40. Pillow – Cross stitch



41. Pillows – Others
42. Fiber Weaving (no baskets)
43. Rugs – 4 square foot or smaller
44. Ceramic article – free form (shaped by hand)
45. Ceramic article – form mold
46. Handmade jewelry
47. Decorated Pumpkin – no carving or cutting – (faces only)
48. Decorated Pumpkin – no carving or cutting – design (no faces)
49. Duct Tape Craft Item
50. Repurposed Item
51. Something from nothing (utilitarian)
52. Something from nothing (ornate)
53. Baskets – hand woven (cane, reed, white oak)
54. Baskets – decorated
55. Room Improvement Décor.
56. Woodworking – small
57. Woodworking – larger – not to exceed size of chair or small chest
58. Wood carving six inches and smaller.
59. Woodworking Bowls
60. Wood carving larger than six inches.
61. Bead work – purses and accessories
62. Decorated Flip Flops
63. Christmas Decorations
64. Christmas Ornaments (must include hook)
65. Hair Accessories.
66. Holiday Wreaths/Door Décor.\*
67. Wreath/Door Décor.\*
68. Painted Quilt Square 2ft x 2ft (Similar to Barn quilt square)\*
69. Framed pictures – cross stitch (not to exceed 18 X 20 including frame)\*
70. Framed pictures – oil, acrylic, water color\*
71. Framed pictures – pencil charcoal.\*
72. Stained glass – no to exceed 24" x 48" in size\*
73. Miscellaneous – any item not included above – duplicates of above  
Categories will not be accepted.
74. Photography – color (must be framed)\*
75. Photography – Black and White (must be framed)\*
76. Photography – Digitally altered/enhanced (must be framed) -  
(Small copy of original must be attached to back)\*
77. Themed Table Setting (One place setting 24" X 30")



\*Entries in class 66 thru 76 must be prepared for hanging.

\*\* Bed quilt may be twin size or larger.

## DEPARTMENT D

## Design Division

**PREMIUMS:** FIRST - \$15.00 SECOND - \$10.00 THIRD - \$5.00

### RULES:

1. One entry in each class per household is accepted.
2. No artificial flowers or foliage will be accepted unless specified. Dried materials may be used where specified.
3. Exhibits must be marked with name on bottom of container.
4. ONLY amateur designers may enter the "Amateur Class."

### AMATEUR CLASS:

1. **"Let the Good Times Grow"** -- Create an arrangement using seasonal flowers with a flower pot as the container and a seed packet as the accessory.
2. **"Complements"** -- Use a variety of colorful blooms to create a split-complementary color scheme using a container of your choice. It can be no larger than 24" x 24".
3. **"Uncanny"** -- Create a seasonal arrangement using your choice of fresh local flowers. The container must be in a can and cannot measure larger than 12" wide by 12" high.
4. **"It's a Girl"** -- Create an arrangement of fresh flowers suitable for a baby shower using accessories of your choice. It can measure no larger than 12" wide by 12" high.
5. **"Hollywood Glam"** -- Create an arrangement of fresh flowers suitable as a formal centerpiece. The size of the arrangement should be in proportion to the container and should not exceed 2 foot in height.
6. **"Clear Beauty"** -- Create an arrangement of fresh flowers using a clear bottle as the container. The arrangement should be no more than 6" high and 6" wide.



www.babesbackground.blogspot.com

## SECTION F - CHRYSANTHEMUMS

Class 14 -- Double or semi-double, one spray

## SECTION G - COCKSCOMB or CELOSIA

Class 15 -- Feathered or plumed, one stalk

Class 16 - Crested, one stalk

## SECTION H - COLLECTION

Class 17 -- Annuals, five specimen, one of a kind or five kinds

## SECTION I - AFRICAN VIOLETS

Class 18 -- Single (any color)

Class 19 -- Double (any color)

## SECTION J - POTTED FOLIAGE

Class 20 -- Blooming

20a -- Pot not over seven inches

20b -- Pot over seven inches

Class 21 -- Non-blooming

21a -- Pot not over seven inches

21b -- Pot over seven inches

## SECTION K - CACTUS PLANTS

Class 22 -- Potted Cactus -- Plant in proportion to pot size

Class 23 -- Cactus Gardens -- At least four varieties

## SECTION L - FERNS

Class 24 -- Boston

Class 25 -- Asparagus

## SECTION M - HANGING BASKETS

Class 26 -- Blooming

Class 27 -- Non-blooming

## SECTION N - HERBS

Class 28 -- Potted Herbs

## SECTION O - ORCHIDS

Class 29 -- Petite Orchids

## SECTION P - FAIRY GARDENS

Class 30 -- Potted Fairy Gardens

## DEPARTMENT B

## Foods

### PREMIUMS:

FIRST - \$4.00

SECOND - \$3.00

THIRD - \$2.00

### RULES:

1. Baked goods must be displayed on rigid disposable plates and covered with clear re-sealable plastic bag.
2. All canned products and pickles must be in clear glass **regulation canning jars and properly sealed**. Canned products not in regulation jars (i.e. mayonnaise, peanut butter, pickle, etc.) will not be accepted. No paraffin on jelly.
3. Jellies, jams, preserves and pickles may be opened for judging.
4. Rings must be on jars.
5. General Rules and Regulations apply.
6. The Ball Blue Book recommendations will be used as the criteria when determining if a product is accepted for judging.
7. Baked goods that become visually unattractive will be discarded.
8. No canned foods will be accepted with rust on lids or rings.
9. Canned products not sealed will not be accepted for entry.
10. Canned foods judged on appearance only. Judges will not taste canned foods.

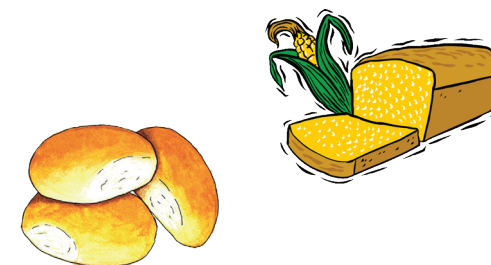
## SECTION I - BREADS

### STANDARDS:

LOOKS:	tender and good, even, golden brown color, good shape
TEXTURE:	fine, even grain, small thin cell walls, light for size, crisp crust
CRUMB:	creamy white, slightly moist, light and elastic, tender
FLAVOR:	good, well-blended flavor, pleasing

### CLASS:

1. Three rolls
2. Light loaf bread (½ loaf)
3. Quick sweet bread (½ loaf or whole small loaf)
4. Yeast sweet bread (½ loaf or 3 rolls)
5. Three biscuits
6. Cornbread – two pieces
7. Cornbread – muffins or sticks (2)
8. Muffins (2)
9. Sourdough (½ loaf)
10. Scones
11. Anything made from canned biscuits



## SECTION II - SPECIAL BREAD CATEGORY (1/2 Loaf)

**PREMIUMS:** FIRST - \$10.00 SECOND - \$8.00 THIRD - \$5.00

All entries in this category must be made from the following recipe contributed by Mrs. Kenton Chittum.

2 tablespoons shortening	1 cup scalded milk
1 cup boiling water	1 yeast cake softened in
2 tablespoons sugar	1/4 cup lukewarm water
2 teaspoons salt	6 to 6½ cups all-purpose bread flour

Put shortening, sugar and salt in a large bowl without a lid, or in top of large double broiler. Add liquids. Cool to lukewarm. Add yeast. Stir in 3 cups of flour. Mix thoroughly. Add 2 cups of flour, mix and add remaining flour gradually, using just enough to prevent sticking to the bowl.

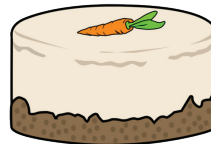
Put the last ½ cup of flour on the mixing board or cloth and use some of it to dust the board very lightly, pushing the rest aside to work into the dough, if you need it. Turn the ball of dough out onto the board, leaving a clean bowl. Cover and let "rest" 10 minutes, which makes the dough easier to work with.

## SECTION III - SPECIAL CAKES (1/2 Cake)

**PREMIUMS:** FIRST - \$10.00 SECOND - \$8.00 THIRD - \$5.00

### RULES:

1. All entries in this category must be made from a carrot cake mix.
2. It may be changed any way desired by cook other than the quantity.
3. Cake will be judged on originality, taste, and appearance. Any frosting or filling may be included.
4. Recipe must be submitted with entry.



## SECTION IV - "HOME GROWN"

**PREMIUMS:** FIRST - \$10.00 SECOND - \$8.00 THIRD - \$5.00

### RULES:

1. Entries may be from scratch or boxed mix.
2. Entries may exhibit theme both inside and outside of cake
3. Entries will be cut
4. Cake will be judged on originality, taste, and appearance. Any frosting or filling may be included.

## DEPARTMENT C

## Horticulture

**PREMIUMS:** FIRST - \$3.00 SECOND - \$2.00 THIRD - \$1.00

### RULES:

1. All plants must be clean and free from damage.
2. No greenhouse entries accepted.
3. All horticulture exhibits must have been grown by exhibitor.
4. All potted plants shall be in clean pots with no evidence of recent repotting; must have been in possession of exhibitor for at least three months.
5. Cut specimens should be displayed in beverage bottles or bud vases.
6. Plant shine will not be acceptable.
7. General rules and regulations apply to Horticulture exhibits.
8. Flowers should not be bigger than the container unless otherwise stated.
9. All plastic bottles should have rocks, marbles, etc in bottom to weigh down. Plastics should also have lids on them with holes drilled in top to help prevent spills.
10. No entries will be accepted after 6:00 p.m. unless in line before cut off.

## SECTION A - MARIGOLDS

- Class 1 -- Tall Yellow, one bloom
- Class 2 -- Tall Orange, one bloom
- Class 3 -- French, one spray
- Class 3a -- Double



## SECTION B - PETUNIAS

- Class 4 -- Single, flowered, one bloom, any color
- Class 5 -- Ruffled (or double), one bloom, any color



## SECTION C - ZINNIAS

- Class 6 -- Large, Dahlia flowered, one bloom, any color
- Class 7 -- Small Flowered, three blooms, any color



## SECTION D - DAHLIAS

- Class 8 -- Large, over eight inches in diameter, one bloom, any color
- Class 9 -- Medium, four to eight inches, one bloom, any color
- Class 10 -- Miniature, under four inches, three blooms, any color



## SECTION E - ROSES

- Class 11 -- Hybrid Teas, one bloom, any color
- Class 12 -- Climber, Rambler, Pillar, one stem, any color
- Class 13 -- Miniature, one bloom, any color



18. Cubed sweet cucumber pickles
19. Sliced sweet cucumber pickles
20. Whole sour cucumber pickles
21. Sliced sour cucumber pickles
22. Dill pickles
23. Pickled Peppers
24. Squash or Zucchini pickles
25. Dilly beans or okra
26. Bread and Butter pickles
27. Miscellaneous pickled vegetables
28. Cucumber relish
29. Chow-Chow
30. Pepper relish
31. Miscellaneous relish
32. Pickled beets
33. Sweet potatoes
34. Green beans (cut)
35. Corn
36. Whole tomatoes
37. Stewed tomatoes
38. Tomato juice
39. Tomato sauce
40. October beans
41. Miscellaneous pepper
42. Kraut (jars must be sealed)
43. Soup mixture
44. Miscellaneous vegetables
45. Apples
46. Applesauce
47. Pears
48. Peaches
49. Grape juice
50. Miscellaneous fruit
51. Molasses and syrups
52. Spaghetti Sauce
53. Sauce (Ketchup, Barbeque, hot, etc)
54. Dehydrated fruit or vegetables
55. Salsa



## SECTION V - SPECIAL ROLLS (Refrigerator Rolls)

**PREMIUMS:** FIRST - \$10.00 SECOND - \$8.00 THIRD - \$5.00  
 \* 3 Rolls on Paper Plate in Plastic Bag \*

### RECIPE:

#### INGREDIENTS:

$\frac{3}{4}$  C Hot Water  
 $\frac{1}{2}$  C Sugar  
 1 Tablespoon Salt  
 3 Tablespoons Margarine  
 1 C Warm Water  
 2 Packs dry yeast  
 1 Egg  
 5  $\frac{1}{4}$  C Sifted Flour

#### DIRECTIONS:

Mix hot water, sugar, salt, margarine; cool until luke warm. Measure warm water into large bowl; sprinkle in yeast; stir until dissolved. Stir in lukewarm mixture, egg and 3 cups flour. Beat until smooth. Add the rest of the flour, mixing well. Place dough in greased bowl and brush top with soft margarine. Cover tightly with waxed paper or aluminum foil.



Refrigerate until doubled in bulk or until needed (4 days). To use pinch down, cut off the amount of dough required and form favorite shapes. Cover: let rise in warm draft-free place until doubled in bulk, about 1 hour. Brush with melted margarine. Bake in 400 degree oven about 10-15 minutes or until done.

## SECTION VI - ALL-AMERICAN APPLE PIE CONTEST

**PREMIUMS:** FIRST - \$100.00 SECOND - \$50.00 THIRD - \$25.00

- *Take-in* for pies will be at 2:00p.m. on Saturday, September 14, 2019.
- *Judging* will be held at 3:00p.m. on Saturday, September 14, 2019.
- Pies will be taken at main building (A).

### RULES:

1. 9 – 10 inch round PIE
2. Entries must be made from scratch. (Crusts and filling)
3. PIE will be judged on originality, taste and appearance.
4. Recipe must be submitted with entry.



## SECTION VIII - CAKES

**PREMIUMS:** FIRST - \$5.00 SECOND - \$4.00 THIRD - \$3.00

### STANDARDS:

The cake should have level or slightly rounded and uniform in thickness, light, tender, fine and uniform grain, slightly moist icing -- smooth texture, good flavor, and appropriate for cake. This does not apply to decorated cakes. No mixes.

### CLASS:

1. Pound or chiffon cake – ½ cake
2. Decorated cakes – Appearance only. Mock forms may be used. Will not cut or taste.
3. 4 cake pops – displayed on form/covered.

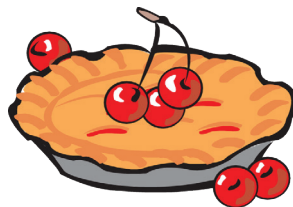


## SECTION IX - PIES

**PREMIUMS:** FIRST - \$4.00 SECOND - \$3.00 THIRD - \$2.00

### CLASS:

1. Fruit Pie (For example, fruit, cherry, apple, peach, etc.)
2. Fried Pies (same list as above)
3. Tarts



## SECTION X - COOKIES

**PREMIUMS:** FIRST - \$4.00 SECOND - \$3.00 THIRD - \$2.00

### CLASS:

1. Brownies – three
2. Other Bar Type Cookies – three
3. Dropped Cookies - three
4. Pressed or Shaped – three



## SECTION XI - CANDY

**PREMIUMS:** FIRST - \$4.00 SECOND - \$3.00 THIRD - \$2.00

### STANDARDS:

smooth consistency, free of crystals, characteristics of type

### CLASS:

1. Assortment – three varieties, two of each
2. Chocolate fudge – three pieces
3. Peanut butter fudge – three pieces
4. Mints – three pieces



## SECTION XII - CANNED GOODS

**PREMIUMS:** FIRST - \$3.00 SECOND - \$2.00 THIRD - \$1.00

### CLASS:

1. Apple jelly
2. Crabapple jelly
3. Blackberry jelly
4. Grape jelly
5. Raspberry jelly
6. Hot pepper jelly
7. Miscellaneous jelly
8. Peach preserves
9. Strawberry preserves
10. Miscellaneous preserves
11. Blackberry jam
12. Raspberry jam
13. Strawberry jam
14. Miscellaneous jam
15. Apple butter – crock pot
16. Apple butter – long cooked
17. Whole sweet cucumber pickles





2019 Washington Co. VA Fair Jackpot Registration Form  
**MARKET LAMB, COMMERCIAL EWE LAMB, MARKET GOAT SHOWS**  
“This is a Virginia Showmasters Circuit Show”  
**Saturday, September 14, 2019 at 12 noon – Weigh In: 8 am to 10 am**  
**Judge: Ryan Mortvedt, Linnville, Iowa**

Name \_\_\_\_\_  
Address \_\_\_\_\_  
Phone \_\_\_\_\_  
Email \_\_\_\_\_

Health papers are required for out of state animals.  
By entering the show, you are agreeing to abide by all rules.

***\*\*Ewe lambs can be double entered if desired to show in the market lamb show and the commercial ewe show***

# Market Goats \_\_\_\_\_ # Market Lambs \_\_\_\_\_ #Commercial Ewes \_\_\_\_\_

Lamb Showmanship (y/n) \_\_\_\_\_ Goat Showmanship (y/n) \_\_\_\_\_

Exhibitor's age as of September 30 of the current year \_\_\_\_\_

Entry fee for all animals is \$20 per head until September 1<sup>st</sup>  
All entries postmarked after September 1<sup>st</sup> and on show day are \$25 per head  
NOTE - Washington County VA exhibitors are exempt from entry fees

MONEY MUST BE INCLUDED WITH ENTRIES  
\*\*CASH ONLY ENTRIES ON DAY OF SHOW

# Market Animals (lambs and/or goats): \_\_\_\_\_ animals x \$20 = \_\_\_\_\_ thru 9/1/2019

Make checks payable to: Washington County Fair

Mail entries and payment to the following:

Natalie Blevins  
22301 Tartan Drive  
Abingdon, VA 24210

Please check one:

WILL REQUIRE PENS IN BARN \_\_\_\_\_ WILL SHOW FROM TRAILER \_\_\_\_\_

Contact for Show Info: Natalie Blevins, cell: 276-356-3553